

HPV Self-sampling testing at Pathlab BOP

Nicolas Zacchi

Snr Medical Laboratory Scientist
Pathlab Bay of Plenty
August 2022

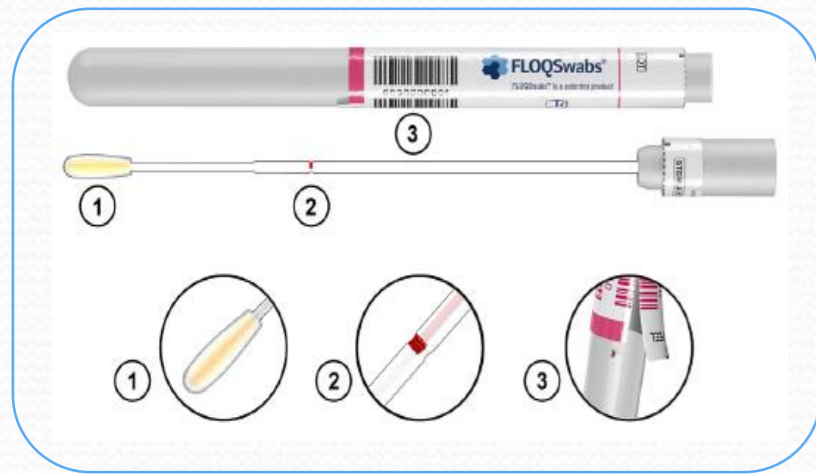
Self-collection at Pathlab



Cat N.	Description	Pack size	Sample*
5E046S	Regular plus, rounded tip, peelable barcode, no breaking point	500 pieces 5 boxes of 100 pcs each	Self-Vaginal
552C.80	Regular, 80 mm breaking point	600 pieces 6 boxes of 100 pcs each	Self-Vaginal
5E089N	Regular, peelable barcode, 60mm breaking point	500 pieces 5 boxes of 100 pcs each	Self-Vaginal
552C.80PB	Regular, peelable barcode, 80mm breaking point	600 pieces 6 boxes of 100 pcs each	Self-Vaginal

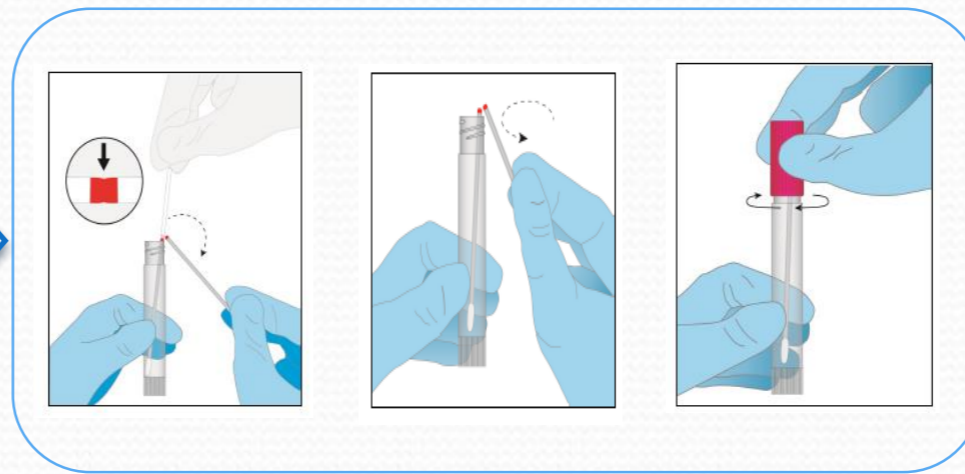
Stability 30 days (2-30 C)

Self-collection at Pathlab



Self-collect and dry transport to lab.

Stability 30 days (2-30 C)



Lab techs transfer the samples into BD SC Diluent tube with simple pre-scored snap of the swab stick

Stability 15 days (2-30 C)

- Labels printed for each sample.
- Transfer done in biosafety cabinet.
- All tubes vortexed together.
- Original FLOQSwab tube kept for tracing purposes until results are released.

BD Onclarity Assay



Run on either Viper™ LT or BD COR™

Labelled BD SC Diluent tube kept for 1 month after run at 4C.

Self-collection at Pathlab

- ✓ More hands-on time (labelling + transfer + vortexing)
- ✓ Repetitive work, with high number of swabs could cause repetitive strain injury.
- ✓ Current process won't be easy to sustain if numbers go above 300 per day.
- ✓ Overall simple process, low risk of contamination.
- ✓ Human error during labelling/transferring.
- ✓ Clinical advantages of self-collection justify this extra work.

THANKS

